

Sevenoaks District

Community Safety Partnership

Annual Action Plan

2012 - 2013



Contents

Introduction	Page 3
Priority issues 2012-13	Page 4
Success measures	Page 6
Anti-social behaviour incl fly tipping	Page 7
Young people's Issues	Page 10
Burglary and Vehicle Crime	Page 12
Theft offences + handling stolen goods (incl. Shoplifting, Theft of Metal and Theft)	Page 14
Speeding vehicles including road safety	Page 16
Substance misuse	Page 18
Domestic abuse	Page 20
Glossary	Page 22
Partners	Page 23
Terms of reference	Page 24
Partnership structure	Page 25
Map of Sevenoaks District	Page 26

This publication is available in large print. For a copy call (01732 227414).

www.sevenoaks.gov.uk

If you need help communicating with us or understanding this document, we can arrange for an interpreter to help you.

Please contact us on 01732 227000 stating your language and telephone number.

Action Plan 2012-13

Introduction

The Sevenoaks District Community Safety Partnership brings together all of the agencies in the District who can have an impact on crime, anti-social behaviour and the fear of crime. A list of partners is set out on page 21. The Partnership has 3 key aims. They are to:

- Reduce and detect crime
- Reduce anti-social behaviour and the fear of crime
- Strengthen community involvement

Each year the Partnership, in common with all of the Community Safety Partnerships in Kent, undertakes an assessment of crime and disorder in the District, using data provided by partners and feedback from residents. The assessment identifies the priority issues for the next year using the following rationale for each community safety type:

- Whether there is significant community concern
- Whether there is an increasing trend
- Whether it contributes to a high volume of crime
- The level of harm it causes
- How well it is performing compared with other parts of Kent and similar partnerships nationally
- Whether the Partnership can add value to the work

This Action Plan identifies where we can best work together to achieve results.

Priority Issues for 2012 – 2013

The Strategic Assessment undertaken during the autumn of 2011 has identified 8 priorities for the Partnership to tackle during 2012-2013. The data referred to in this Action Plan is based on the Strategic Assessment, which uses data between October 2010 – September 2011. Trends in the identified priorities continue to be monitored on a quarterly basis and the first monitoring will be available in July 2012.

The 8 priorities, in no particular order, are:

- Anti-Social Behaviour (incl. Fly-Tipping)
- Burglary (incl Burglary Other than Dwelling)
- Theft Offences + handling stolen goods (incl. Shoplifting, Theft of Metal and Theft Offences)
- Substance Misuse
- Young People's Issues
- Vehicle Crime (TOMV and TFMV)
- Domestic Abuse
- Speeding Vehicles incl Road Safety

Although the Partnership's main focus will be the 8 priorities, it will continue to monitor and plan for trends in crime and other community safety issues and address them through the Community Safety Unit's daily briefings and other tasking arrangements in order to reduce recorded crime.

During 2010/11, Sevenoaks District had the lowest recorded crime in the County with the number of crimes falling by 214 crimes or 4.2% to 4,956. Crime in the District has fallen consistently since 2005/6 when there were 7,948 crimes.

Many Districts are now seeing increases in crime and the challenge for the Sevenoaks District for 2012/13 will be to remain one of the lowest crime areas in the County and to counter any upward trend.

The Action Plan

The following pages set out the overall targets for the Community Safety Partnership and an action plan is linked to each priority. The action plan does not include details about the numerous activities already undertaken by partners, town and parish councils, the voluntary sector and others as part of their day to day work, but highlights activities in addition to core work, which partners will undertake throughout the forthcoming year. All priorities include actions around public perception.

Funding and monitoring

Funding for the actions included within the Action Plan is available from a number of sources, including partners' own budgets, Home Office funding which is allocated to district Community Safety Partnerships by Kent County Council, Choosing Health funding and other small amounts of funding from a variety of sources, for example the Kent People's Trust. Regular monitoring will take place to ensure that individual projects continue to deliver positive results as well as value for money and that this Action Plan is on target.

Equalities

In preparing the action plan, issues such as equality and diversity were considered to ensure that everybody feels safe in the District.

SEVENOAKS DISTRICT COMMUNITY SAFETY PARTNERSHIP –ACTION PLAN 2012-13

SUCCESS MEASURES

All recorded crime:

All Crime reduced by 1% compared with the previous year

Anti-Social Behaviour

An improvement in behaviour achieved in 80% of cases accepted by the Anti-Social Behaviour Task Group .

75% of Anti-Social Behaviour victims satisfied with action taken.

100% of fly-tipping convictions to be widely publicised.

Young People's issues

Intervention projects, including the Power Project and 8-12s Project, maintained

The number of young people entering the criminal justice system for the first time reduced.

Burglary

Number of dwelling & non dwelling (shed, commercial/retail premises) burglaries to be reduced by 2%

Vehicle Crime

Number of Vehicle Crimes (Theft of vehicles and Theft from vehicles) to be reduced by 2%

Theft offences & handling stolen goods (incl shop lifting , theft of metal & metal offences)

The number of businesses participating in the Safer Town Scheme to be increased by 10 %

The number of exclusion/banning notices issued to be increased by 10%

Speeding incl Road Safety

Communities in areas where speeding has been identified as a top 3 priority involved in a range of speeding initiatives.

Substance Misuse

Substance Misuse Action Plan to be 85% on target

Domestic Abuse

The number of repeat incidents & repeat victims of Domestic Abuse to be reduced by 2%

Domestic abuse action plan to be 80% on target

Anti-Social Behaviour (incl flytipping & graffiti)¹

The number of incidents of ASB² recorded by the Police in Sevenoaks District is the lowest in the County, at 1,318 incidents. At ward level, Swanley White Oak and Edenbridge South and West recorded the highest levels of ASB incidents.

217 reports of **Anti-Social Behaviour** were made to the District's Anti-Social Behaviour Officer, an increase of 3 reports or 1.4% when compared to the same period last year.

Fly Tipping - The fly capture database shows that there was a 14% decrease in the number of fly-tipping incidents between 2009/10 and 2010/11. This is a reduction of 74 incidents. However, Sevenoaks District residents are more worried about fly-tipping than in any other District across Kent. Fly-tipping incidents have decreased by 31% since 2008/09. The Partnership will look for opportunities to publicise fly-tipping convictions.

Graffiti - Requests to the District Council for Graffiti to be cleaned fell by 9% from 88 in the previous period to 80 in the present period. 17% of the District Council's Residents' Panel respondents said that graffiti is either a 'very big problem' or 'fairly big problem'

Graffiti and fly tipping have been added to this year's Action Plan as part of the Anti-Social Behaviour priority.

¹ All data is based on the Strategic Assessment which uses data from October 2010 to September 2011 unless otherwise stated

² ASB – Anti-social Behaviour

	Priority Action	Lead Agency	Other Partners	By when	Funding
Anti-Social Behaviour (ASB)					
1.1	Implement risk assessments for ASB reports and ensure high risk cases are managed through ASB Task Group ³ or Daily Tasking Process ⁴ . Vulnerable victims of ASB to be identified and appropriate actions planned. Consider how best to share information about vulnerable victims between agencies.	CSU	SDC Police Housing Associations KCC Wardens	On going	Use of existing resources
1.2	Involve local communities more actively in finding solutions to ASB including through PACT Panels. Ask PACT Panels to identify any improvement in community safety in their areas over the past year so that good practice can be shared.	Exec Group	ASB Co-ordinator CSU PACTs Local Champions	On going	Use of existing resources
1.3	Where possible, work with families rather than individuals to deal with Anti-Social Behaviour, in a minimum of 10 cases.	Anti Social Behaviour Task Group KCC Children & Families	All	March 2012	Use of existing resources but working differently
1.4	Use mobile CCTV ⁵ effectively to deter crime and anti-social behaviour. Mobile capabilities effectively	T&CG CSU	Police	Ongoing	Existing resources

³ ASB Task Group – Group of agencies who meet regularly to take joint action against individuals known to be causing anti-social behaviour

⁴ Daily Tasking Process – daily meeting of agencies including the Police, District County, KCC Warden supervisor and Housing Associations to take action on anti-social behaviour reported over the last 24 hours.

⁵ CCTV – Closed Circuit Television

	Priority Action	Lead Agency	Other Partners	By when	Funding
	deployed and 9 out of 12 cameras (75%) to be deployed at any one time				
1.5	Maximise the use of the Probation Service's Community Payback ⁶ scheme. At least 4 initiatives to take place across the District	CSU	Probation	March 2013	Negative cost because of the value of the work undertaken.
1.6	Undertake monthly Environmental Visual Audits (EVA) ⁷ across the District in conjunction with local businesses and residents. Identify areas where EVAs relating to fly-tipping, littering and graffiti are needed. Implement an action plan for each EVA which should be at least 80% completed.	CSU T&CG	KCC Highways, Police, Housing, Town & Parish Councils	March 2013	Existing resources and Safer & Stronger funding Clean Kent fund
1.7	Conduct a campaign to reduce the impact of fly-tipping on the environment and improve public perception by encouraging the reporting of fly-tipped materials, cleaning up fly tipping from public land and highways within 7 days of reporting and implementing the use of Smart Water. Widely publicise convictions for fly-tipping.	CSU	Direct Services KCC Highways	June 2012	Existing resources

⁶ The Probation Service works with offenders to make environmental improvements

⁷ Environmental Visual Audit – Visit by agencies, landowners and local representatives to identify remedial action that can be taken in areas in need of environmental improvement in order to reduce crime or anti-social behaviour

Young People's Issues

There has been a significant drop in the number of young offenders in Sevenoaks. There were 12 (16.1%) fewer young people offending between 1 July 2010 and 30 June 2011 than had been the case in the previous 12 months, representing the lowest proportion of young offenders in the County. The breakdown by gender shows that the majority of offenders were male (77.4%). During the same period there were 74 new entrants to the Youth Justice System in Sevenoaks. Of these 19 were females (25.7%) and 55 males (74.3%).

The three most common offences committed by young people in Sevenoaks during the same period were Violence against the Person, Theft and Motoring Offences.

The Partnership's Power Project and the 8-12s Project are respected youth diversion and support projects, assessed to have a positive effect on young people. Young people's issues, including these projects, will remain a priority for the Sevenoaks District Community Safety Partnership.

	Priority Action	Lead Agency	Other Partners	By When	Funding
YOUNG PEOPLES ISSUES					
2.1	Maximise value of Power Project & 8-12's Project (early intervention projects), enabling them to support targeted families	YOS	All Partners	On going	Safer & Stronger Funding WK Extra
2.2	Undertake targeted work with 14-19yrs olds to assist in their transition to work	KCC	Local Children's Trust Board	March 2013	Local Children's Trust Board
2.3	Produce a directory of early intervention projects for young people, families and front line practioners.	SDC	All partners	June 2011	Current resources
2.4	Maximise the Olympic legacy relevant for young people (eg obesity, citizenship, drugs and alcohol, equality & diversity)	SDC	All Partners	June 2012	Current resources and Safer and Stronger funding
2.5	In partnership provide diversionary activities that engage young people in positive activities during their free time and school holidays.	Integrated Youth Service KCC	Voluntary Youth Sector	March 2013	Early Intervention Grant YOF Local Members Grants
2.6	Deliver a programme in schools to address cyber bullying ⁸	KCC Education Police	KCC Youth Services	June 2013	Existing resources

⁸ Bullying using the internet and other social media

Burglary & Vehicle Crime⁹

Burglary Dwelling has decreased by 18.6% from 338 offences to 275 offences. Per 1,000 population Sevenoaks ranks 6th best in the County and 8th in it's MSG¹⁰. By December 2011, this crime type had increased slightly by 33 crimes compared with the previous year. When residents were asked about their concerns about crime, burglary of homes (Burglary Dwelling) was listed as the top priority for the Sevenoaks District (73% of respondents to the 2010 Residents Panel). **Burglary Other than Dwelling** has increased significantly by 15.7% from 479 offences to 554 offences. Per 1,000 population this ranks Sevenoaks 11th in the County and 11th in its MSG.

Vehicle Crime - Thefts from motor vehicles (TFMV) have decreased by 10.6% from 545 to 466. The trend suggests that the level of Theft from a Motor Vehicle offences are likely to decrease in the next year. Per 1,000 population Sevenoaks ranks 9th in the County and 12th in the MSG. **Thefts of motor vehicle (TOMV)** have increased by 11.8% from 186 offences to 208 offences. It is difficult to predict a trend for this crime type as there are considerable variations in the yearly statistics. Per 1,000 population Sevenoaks ranks 11th in the County and ranks 14th in it's MSG.

Both of these crime types are a priority for the Partnership.

⁹ All data is based on the Strategic Assessment which uses data from October 2010 to September unless otherwise stated

¹⁰ MSG - Most Similar Group – a group of Partnerships assessed as having similar characteristics

Priority Action		Lead Agency	Other Partners	By When	Funding
BURGLARY & VEHICLE CRIME					
3.1	Use Tasking & Co-ordination Group (T&CG) ¹¹ to plan and co-ordinate campaigns to encourage residents and businesses to protect their property. Work with partner agencies to increase campaign coverage, eg In Shape ¹² , businesses and schools using child friendly leaflets	CSU	Police Business Crime Reduction Partnership	March 2013	Existing resources
3.2	Work with Town & Parish Councils and National Trust to reduce vehicle crime in beauty hotspots	CSU	Police	March 2013	Existing resources
3.3	Increase proactive use of social media including Twitter and Facebook	CSU	All Partners	March 2013	Existing resources
3.4	Undertake four Multi Agency operations at boot fairs to deter/detect the disposal of stolen/counterfeit goods and provide relevant crime prevention advice.	CSU	Police Trading Standards KCC Wardens	March 2012	Existing resources
3.5	Proactively manage cohort of PPOs ¹³ to reduce risk of offending in the District. Increase liaison with partner agencies.	Offender Management Unit	Police CSU	Ongoing	Existing resources

¹¹ Group of agencies who take a forward look at positive interventions to address future crime trends

¹² District Council magazine delivered to every household in the District

¹³ Prolific and other Priority Offenders

Theft Offences + handling stolen goods (including Shoplifting, Theft of Metal and Theft offences)

Shoplifting - Shoplifting offences have increased significantly by 21% from 329 offences to 398 offences. The trend suggests that shoplifting will remain at approximately the same level next year. Per 1,000 of the population Sevenoaks ranks 1st (lowest crime rate) in the County.

Theft Offences - Theft Offences have increased significantly by 27.9% from 757 offences to 968 offences. The trend shows that Theft Offences have been increasing for the past three years and it is likely that the trend will continue to increase in the next year. Per 1,000 of the population Sevenoaks still ranks 1st (lowest crime rate) in the County. Theft Offences account for 19.1% of all recorded crime in Sevenoaks

Pedal Cycle - Theft of Pedal Cycles have increased by 12% from 50 offences to 56 offences. Per 1,000 population Sevenoaks has the lowest rate in the County.

Due to this significant increase, these crime types are a priority for 2012-13

Priority Action		Lead Agency	Other Partners	By When	Funding
Theft offences + handling stolen goods (including Shoplifting, Theft of Metal and Theft offences)					
4.1	Develop and expand the Business Crime Reduction Partnership ¹⁴ across Sevenoaks District	CSU BCRP	Police SDC	June 2013	Existing resources
4.2	Target repeat offenders of acquisitive crime ¹⁵ through the Offender Management Unit ¹⁶	Probation Police BCRP	CSU	April 2012	Existing resources
4.3	At least 5 multi-agency community events around shops and town centres to include purse dipping	CSU	All Partners	March 2013	Existing resources
4.5	Reduce Pedal Thefts by education, support and tactical operations. Consider relating crime prevention work with Paralympics Cycling events at Brands Hatch.	CSU	All Partners	December 2012	Existing resources
4.6	Develop property marking campaign across District	CSU	All Partners	May 2012	Existing resources
4.7	At least 3 multi-agency operations to address increasing trends of theft, eg metal and fuel	CSU	All Partners	March 2013	Existing Resources

¹⁴ A partnership of businesses who work together to operate the Shopsafe and Pubwatch schemes, both aimed at reducing crime and anti-social behaviour, primarily in town centres

¹⁵ Acquisitive crime - **crime** committed in order to gain money or possessions, e.g. shoplifting, fraud, theft

¹⁶ Offender Management Unit – Police, Probation and other agencies working together to reduce crime and re-offending

Speeding vehicles including road safety

There are currently 10 PACTs¹⁷ in the District. PACT action plans are updated on a regular basis. Speeding vehicles is the most consistently identified priority for local people. Throughout Sevenoaks there are major trunk roads i.e. M25/A21 which facilitate the majority of traffic through the District. On KCC managed roads the number of crashes has decreased from 241 in 2009 to 234 in 2010. This is a reduction of 2.9%. This represents a 53% decrease in KSI casualties on Kent roads compared to the 1994-1998 average.

Priority Action	Lead Agency	Other Partners	By When	Funding
SPEEDING				
5.1	Target 4 crash sites that have the highest number of residents of the District injured and do multi-agency events including enforcement, support and education including. Implement a media strategy around speeding.	Kent Fire & Rescue Service CSU	Exec Group Highways Police Council Kent & Medway Safer Cameras partnership	March 2013 Existing resources
5.2	Promote Speedwatch ¹⁸ across the District including training for volunteers	Kent Police - Training CSU - Promotion/Volunteers	DVLA	March 2012 Existing resources
5.3	Continue to roll out OP Zig Zag, an operation to deter parking outside schools, where it is reported by communities as a problem	KCC CSU	SDC - Parking Police Schools	March 2013 Existing resources
5.4	Use Restorative Justice ¹⁹ through Kent Fire & Rescue Service for road safety.	KFRS	Police CSU	June 2012 Existing resources KFRS

¹⁷ PACT – Partners and Community Together – local community meetings held to identify and take action against priority crime and disorder issues

¹⁸ Speedwatch – a community response to speeding, enabling local residents to monitor the speed of traffic through their communities

¹⁹ Restorative Justice - A form of criminal **justice** that emphasizes reparation to the victim or the affected members of the community

	Priority Action	Lead Agency	Other Partners	By When	Funding
5.5	Arrange activities around national road safety campaigns	CSU	KFRS	December 2012	Existing resources
5.6	Monitor the number of people educated through KCC Highways after receiving fine/points for speeding	KCC Highways	Police	March 2013	
5.7	Work with communities to identify long term road safety issues and work with KCC highways to find solutions	Police KCC highways	CSU Town & Parish Councils	March 2013	Existing Resources

Substance Misuse

The number of Sevenoaks residents accessing treatment for substance misuse increased by 26% over two years to 207 in 2010/11. Clients reporting alcohol as their primary problem substance accounted for most of the increase which may be due to the introduction of new alcohol services in the West Kent area from 2010. The proportion of clients who are Sevenoaks residents accounts for only 3.7% of the treatment population in Kent. Alcohol remains the most commonly reported substance for those in treatment.

Between April 2010-March 2011, 169 people were identified as 'people with drug problems' (22% fall on the previous year) and 185 people who were identified as 'people with alcohol problems' (an increase of 11% from the previous year).

Drug Offences have decreased by 26.7% which is a decrease of 46 offences compared to last year. Hospital data tells us that 240 people from Sevenoaks were admitted to hospital with mental and behavioural disorders due to psychoactive substance use. This is a fall of 30 admissions compared to the previous year.

Priority Action		Lead Agency	Other Partners	By When	Funding
SUBSTANCE MISUSE					
6.1	Follow up on implementation of a shared training package delivered to partners last year around Identification and Brief Advice (IBA)	Substance Misuse Task Group	Tier 1 & 2 (information and advice) workers Substance misuse workers, PCSOs, Wardens, PCT Health & Wellbeing Board	May 2012	Existing CSP Budget Partners Training Budgets
6.2	Structured Early Intervention Projects to include referrals to Alcohol Clinics and targeted Youth work Intervention	Kenward Trust CSU	Kenward Trust KDAAT T&CG	March 2012	Choosing Health CSP Alternative funding
6.3	Use a partnership approach to address underage drinking where it is reported by communities as a problem	Trading Standards	Landlords/Off License Substance Misuse Task Group KDAAT	Ongoing	Existing budgets
6.4	Map services across the District, identify gaps and produce directory.	Substance Misuse task Group	All Partners	June 2012	Existing budgets
6.5	Locate a drugs worker in the Community Safety Unit	CRI ²⁰	KDAAT ²¹ CSU ²²	June 2012	KDAAT

²⁰ Substance Misuse charity commissioned by KDAAT

²¹ Kent Drug & Alcohol Action Team

²² Community Safety Unit – Sevenoaks District Council and Police joint unit, working with KCC and other agencies

Domestic Abuse

Domestic Abuse incidents have decreased by 5.7% from 871 incidents to 821 incidents. Per 1,000 population this is the lowest in the County and Sevenoaks has the lowest volume in the County. This decrease is set against a County rise of 1.8%. There has been a small increase in the number of repeat victims of domestic abuse. There were 190 recorded incidents involving repeat victims, an increase of 6.3% when compared to the previous year. The percentage of repeat victims is 23.1%, the 4th lowest in the County.

Only 13% of respondents to the Residents Panel survey said they were concerned about domestic abuse. Whilst this indicates a low level of concern among local residents, Domestic Abuse tends to be a 'hidden crime' with low levels of reporting.

	Priority Action	Lead Agency	Other Partners	By When	Funding
DOMESTIC ABUSE					
7.1	Raise awareness and sign posting to services through the West Kent Directory ²³ and the CSP website, particularly targeted repeat victims	CSP Domestic Abuse Task Group	Tier 1 workers Health provider Police Housing	On going	Existing resources
7.2	Commission domestic abuse work with children and young people to raise awareness improve self esteem and respect and improve healthy and respectful relationships.	Domestic Abuse Task Group Local Children's Trust Board	Exec Group Police (safer schools) YISP	May 2012	Funding to be identified, possibly through Safer & Stronger Funding
7.3	At least 3 perpetrators to complete the full Community Domestic Abuse Perpetrators' Programme ²⁴	St Giles Trust	CSP	March 2013	Choosing Health Safer & Stronger Funding

²³ Directory of services for victims of domestic abuse

²⁴ A rolling programme of evening workshops to help perpetrators of domestic abuse to understand and change their behaviour

7.4	Support voluntary support workers	DA Working Group Exec Group	Voluntary Organisations	June 2012	Existing resources
7.5	Raise awareness of male services (victim and perpetrators) and services for victims of elder abuse.	DA Working Group	All Partners	June 2012	Existing resources
7.6	Increase use of the MARAC ²⁵ to reduce re-offending and repeat victims	Kent Police	MARAC and CSU	January 2012	Existing resources, Safer & Stronger

²⁵ Multi-Agency Risk Assessment Conference – a group of agencies who identify those at the most serious risk of domestic abuse work to protect victims

GLOSSARY:

BCRP – Business Crime Reduction Partnership

CCTV – Closed Circuit Television

CDAP – Community Domestic Abuse Perpetrators Programme

CSP – Community Safety Partnership

CSU – Community Safety Unit

EVA – Environmental Visual Audit

KCC – Kent County Council

KDAAT – Kent Drug & Alcohol Action Team

MSG – A Group of Partnerships thought by the Home Office to have similar characteristics and used for benchmarking purposes.

PACT – Partners and Communities Together

PCT – Primary Care Trust

SDC – Sevenoaks District Council

T&CG – Tasking and Co-ordination Group – monthly meeting to plan response to trends

YOS – Youth Offending Service

Membership of the Community Safety Partnership and contact details

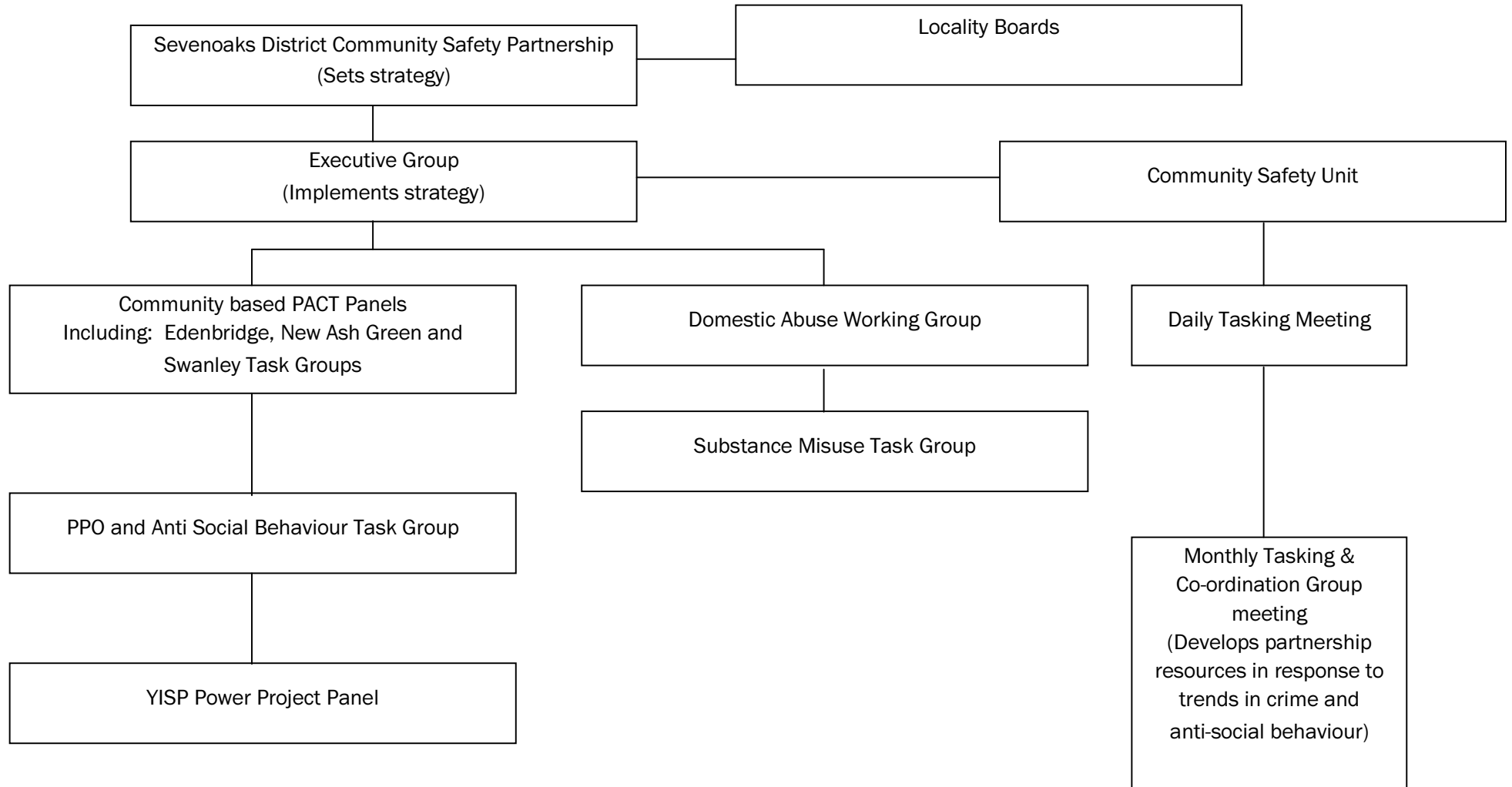
<p>Sevenoaks District Council Argyle Road Sevenoaks Kent TN13 1GP Tel: 01732 227000 Web: www.sevenoaks.gov.uk</p>	<p>Kent Police 1 Pembury Road Tonbridge Kent TN9 2HS Tel:01622 690690 Web: www.kent.police.uk</p>	<p>Kent Fire & Rescue Service South Division HQ, Loose Road Maidstone Kent ME15 9QB Tel: 01622 774500 Web: www.kent.fire-uk.org</p>	<p>Kent Police Authority 1st Floor, Gail House Lower Stone Street Maidstone ME15 6NB Tel: 01622 677055 Web: www.kentpa.kent.police.uk</p>
<p>NHS West Kent Wharf House, Medway Wharf Road Tonbridge Kent TN9 1RE Tel: 01732 375200 Web: www.westkentpct.nhs.uk</p>	<p>Kent Probation Service 17 Garden Road Tunbridge Wells Kent TN1 2XP Tel: 01892 559350 Web: www.kentprobation.org</p>	<p>KCC Social Services Croft House, East Street Tonbridge Kent TN9 1HP Tel: 01732 362442 Web: www.kent.gov.uk</p>	<p>KCC Children, Families and Education 17 Kings Hill Avenue West Malling Kent ME19 4UL Tel: 08458 247247 Web: www.kent.gov.uk</p>
<p>KCC Youth Offending Service Croft House, East Street Tonbridge Kent TN9 1HP Tel: 01732 362442 Web: www.kent.gov.uk</p>	<p>KCC Youth Service Bishops Terrace, Bishops Way Maidstone Kent ME14 1AF Tel: 08458 247 247 Web: www.kent.gov.uk</p>	<p>KCC Trading Standards PO Box 286 West Malling Kent ME19 4HW Tel: 01732 525291 Web: www.kent.gov.uk</p>	<p>KCC Community Safety Sessions House County Hall Maidstone ME14 1XQ Tel: 01622 696575 Web: www.kentpartnership.org.uk</p>
<p>West Kent Housing Association 101 London Road Sevenoaks Kent TN13 1AX Tel: 01732 749400 Web: www.westkent.org</p>	<p>Kenward Trust Kenward Road Yalding Maidstone Kent ME18 6AH Tel: 01622 814187 Web: www.kenwardtrust.org.uk</p>	<p>MOAT Homes Galleon Boulevard Crossways Dartford Kent DA2 6QE Tel: 0845 600 1006 Web: www.moat.co.uk</p>	<p>Kent Drug and Alcohol Action Team Invicta House, 3rd Floor County Road Maidstone Kent ME14 1XX Tel: 01622 221676 Web: www.kdaat.org</p>
<p>West Kent Extra 101 London Road Sevenoaks Kent TN13 1AX Tel: 01732 749400 Web: www.westkent.org</p>	<p>Voluntary Action West Kent 19 Monson Road Tunbridge Wells Kent TN1 1LS Tel: 01892 530330 Web: www.vawk.org.uk</p>		

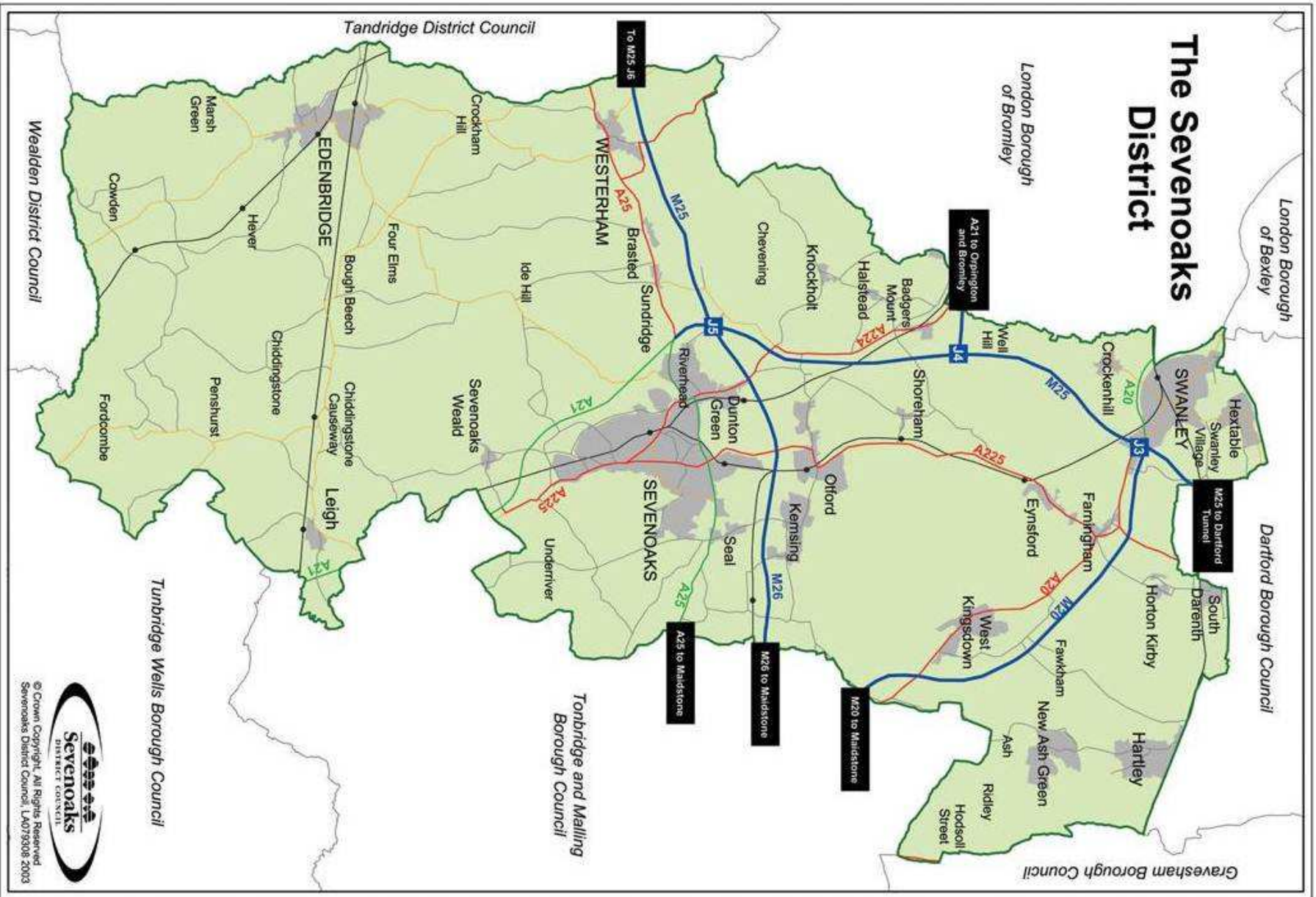
Terms of Reference

The Partnership's terms of reference are to:

- Undertake periodic reviews of community safety in the District and disseminate the findings to the public
- Develop a yearly strategy and action plan to tackle community safety
- Monitor and report progress in meeting the agreed targets and actions
- Secure resources and funding from parent organisations and others for projects to address agreed shared priorities in the Community Safety Action Plan
- Act as a forum for discussion of topical local community safety issues and agree follow up actions if appropriate
- Promote community safety in the District in conjunction with other local organisations and bodies
- Co-ordinate and maintain an overview of all activities relevant to community safety in the District.

Structure of Sevenoaks District Community Safety Partnership





Enquiries to:

Community Safety Co-ordinator
Sevenoaks District Council
PO Box 183, Argyle Road
Sevenoaks, Kent TN13 1GP
Telephone 01732 227000
Fax 01732 742339
Minicom 01732 227496
E-mail community.safety@sevenoaks.gov.uk

